

Industrial Universal Load Cell

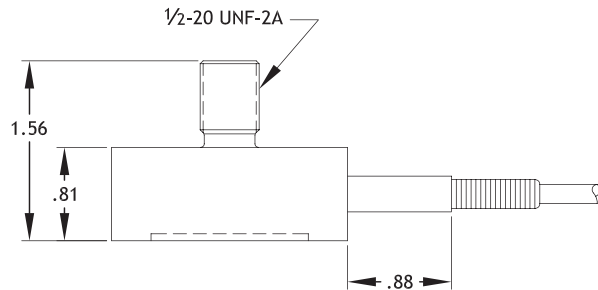
Model XLUN294



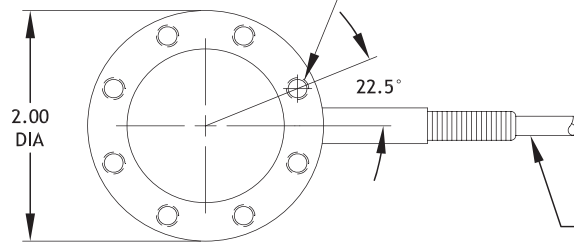
max.
10,000
lbs



Force



10-32 UNF X .40 DEEP, 8 MOUNTING HOLES
EQUALLY SPACED ON A 1.687 DIA BASIC CIRCLE



10FT OF 4-CONDUCTOR CABLE

WIRING CODE:

White +Output
Green -Output
Black -Input
Red +Input

OPTIONAL TENSION PLATE AVAILABLE: ORDER DMi P/N: 99-2718-0200

All dimensions are in inches, unless otherwise noted. Also available in metric units.



Measuring ranges

- 0-25 to 0-10,000 lbs



Features

- Tension/Compression
- Low Profile
- 0.15% Linearity
- Integral Mounting Stud
- Stainless Steel Construction



Options

- Cable Length
- Extended Compensated Temperature Range
- Bridge Resistance
- Tension Plate
- Inline Amplifier



Drawing

- 99-2764-0000

PERFORMANCE SPECIFICATIONS (FSO is Full Scale Output)		Capacity (lbs)	Ordering Example
EXCITATION	10 VDC, 15 VDC max	25	XLUN294-0025
OUTPUT	2 mV/V	100	XLUN294-0100
BRIDGE RESISTANCE	350 Ohms	1,000	XLUN294-001K
LINEARITY	±0.15% FSO	2,500	XLUN294-02K5
HYSTERESIS	±0.10% FSO	10,000	XLUN294-010K
REPEATABILITY	±0.05% FSO		
ZERO BALANCE	±2% FSO		
OPERATING TEMP RANGE	-50 to +225°F (-46 to +107°C)		
COMPENSATED TEMP RANGE	+60 to +160°F (+15 to +71°C)		
THERMAL EFFECTS			
on Zero	±0.005% FSO/°F		
on Span	±0.005% Reading/°F		
SAFE OVERLOAD	150% of Capacity		
ULTIMATE OVERLOAD	300% of Capacity		
CASING MATERIAL	Stainless Steel		
STANDARD CALIBRATION	Positive in Tension		