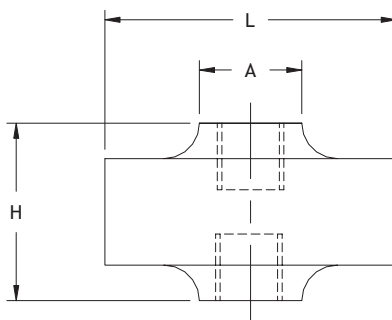
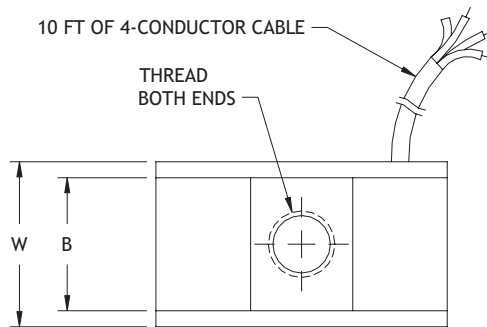


## Low Profile Load Cell

Model XLU11

Force



## WIRING CODE

+EXCITATION	RED
-EXCITATION	BLACK
+SIGNAL	GREEN
-SIGNAL	WHITE
SHIELD	SHIELD

max.  
1,000  
lbs

## Measuring ranges

- 0-10 to 0-1,000 lbs



## Features

- High Accuracy
- Low Profile
- Tension/Compression



## Options

- Cable Length
- Connector (Binder series 709)
- Inline Amplifier
- Bridge Resistance



## Drawing

- 99-3380-0000

All dimensions are in inches, unless otherwise noted. Also available in metric units.

PERFORMANCE SPECIFICATIONS (FSO is Full Scale Output)		Capacity (lbs)	Ordering Example	L	A	W	B	H	Thread	Material
EXCITATION	10 VDC	10	XLU11-0010	1.504	.600	.54	.375	.750	10-32	Aluminum
OUTPUT	2 mV/V	25	XLU11-0025	1.521	.600	.66	.500	.750	1/4 - 28	
BRIDGE RESISTANCE	350 Ohms	50	XLU11-0050	1.584	.625	.66	.500	.750	1/4 - 28	
LINEARITY	0.1% FSO	75	XLU11-0075	1.640	.650	.66	.500	.750	1/4 - 28	
HYSTERESIS	0.1% FSO	100	XLU11-0100	1.664	.660	.66	.500	.750	1/4 - 28	
REPEATABILITY	0.05% FSO	150	XLU11-0150	1.642	.575	.93	.750	1.00	3/8 - 24	
ZERO BALANCE	1.0% FSO	200	XLU11-0200	1.688	.580	.93	.750	1.00	3/8 - 24	
COMPENSATED TEMP RANGE	+60 to +160°F (+15 to +71°C)	300	XLU11-0300	1.748	.600	.93	.750	1.00	3/8 - 24	SST
OPERATING TEMP RANGE	-65 to +200°F (-53 to +93°C)	500	XLU11-0500	1.658	.580	.93	.750	1.00	3/8 - 24	
THERMAL EFFECTS on Zero	±0.005% FSO/°F	750	XLU11-0750	1.734	.585	.93	.750	1.00	3/8 - 24	
on Span	±0.005% Reading/°F	1,000	XLU11-001K	1.784	.615	.93	.750	1.00	3/8 - 24	
SAFE OVERLOAD	150% of Capacity									
CALIBRATION	Tested in Compression									