

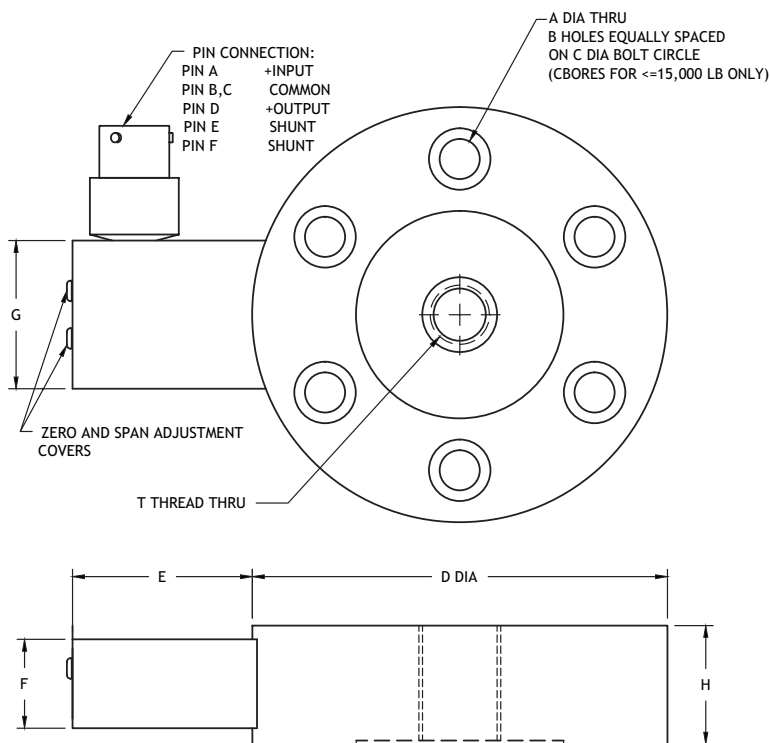
## Universal Pancake Load Cell 0-5V

Model XLP58-5V

Force



max.  
50,000  
lbs



All dimensions are in inches, unless otherwise noted. Also available in metric units.

**Measuring ranges**

- 0-5 to 0-50,000 lbs

**Features**

- High Accuracy
- Tension/Compression
- 0-5V Output
- Extremely Rugged Design
- Welded Stainless Construction
- Wide Range of Capacities

**Options**

- Dual Bridge
- Integral Cable
- No Pots for Zero and Span Adjustment

**Drawing**

- 99-2626-0000

PERFORMANCE SPECIFICATIONS (FSO is Full Scale Output)		Capacity (lbs)	Ordering Example
EXCITATION	11-28 VDC	7,500	XLP58-5V-07K5
OUTPUT	0-5 VDC $\pm$ 10% adjustable	15,000	XLP58-5V-015K
LINEARITY	$\pm$ 0.1% FSO	20,000	XLP58-5V-020K
HYSTERESIS	$\pm$ 0.08% FSO	50,000	XLP58-5V-050K
REPEATABILITY	$\pm$ 0.03% FSO		
ZERO BALANCE	$\pm$ 10% adjustable		
OPERATING TEMP RANGE	0 to +185°F		
COMPENSATED TEMP RANGE	+60 to +160°F		
THERMAL EFFECTS on Zero on Span	$\pm$ 0.005% FSO/°F $\pm$ 0.005% Reading/°F		
SAFE OVERLOAD	150% of Capacity		
ULTIMATE OVERLOAD	300% of Capacity		
MATERIAL	17-4 PH Stainless Steel		
STANDARD CALIBRATION	Positive in Tension		
CONNECTOR 5,000 lbs & below	PTIH-10-6P or equal		

Ranges (lbs)	ØD	H	A	B	C	T	E	F	G
0-5 to 0-1,000	3.00	1.00	.28	6	2.25	3/8-24UNF	2.2	.75	2.0
0-2,000 to 0-5,000	3.50	1.00	.34	6	2.63	1/2-20UNF	2.2	.75	2.0
0-7,500 to 0-15,000	5.50	1.80	.40	8	4.50	1-14UNS	2.3	1.5	2.0
0-20,000 to 0-50,000	6.00	1.80	.53	8	4.88	1 1/2-12UNF	2.3	1.5	2.0