

## Miniature Donut Load Cell

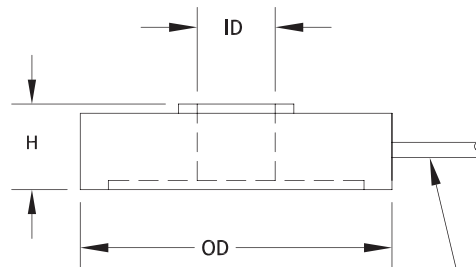
Model XLD100/XLD125



max.  
500 lbs



Force



5FT OF 4-CONDUCTOR CABLE

White +Output  
Green -Output  
Black -Input  
Red +Input



#### Measuring ranges

- 0-5 to 0-500 lbs



#### Features

- Load Washer Design
- Very Low Profile
- Fits up to 3/8" Bolt



#### Drawing

- 99-2770-0000

All dimensions are in inches, unless otherwise noted. Also available in metric units.

PERFORMANCE SPECIFICATIONS (FSO is Full Scale Output)		Capacity (lbs)	Ordering Example	OD	H	ID thru hole
EXCITATION	10 VDC, 15 VDC max	5 - 200	XLD100	1.00	.28	.100 dia to .250 dia
OUTPUT	2 mV/V Nominal	25 - 500	XLD125	1.25	.25	.100 dia to .375 dia
BRIDGE RESISTANCE	350 Ohms					
LINEARITY						
HYSTERESIS	±1.0% FSO, Combined					
REPEATABILITY						
ZERO BALANCE	±2.0% FSO					
OPERATING TEMP RANGE	-65 to +250°F (-54 to +121°C)					
COMPENSATED TEMP RANGE	+60 to +160°F (+15 to +71°C)					
THERMAL EFFECTS						
on Zero	±0.005% FSO/°F					
on Span	±0.010% Reading/°F					
SAFE OVERLOAD	150% of Capacity					
ULTIMATE OVERLOAD	300% of Capacity					
CASING MATERIAL	Stainless Steel					

#### How to order

Note: not all combinations are possible, see chart

