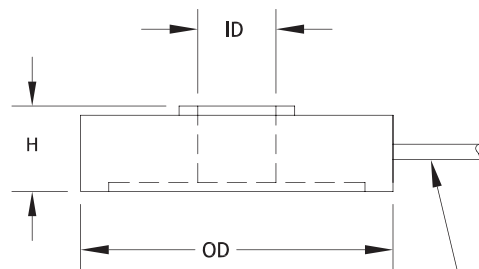


Subminiature Donut Load Cell

Model XLD050/XLD075

Force

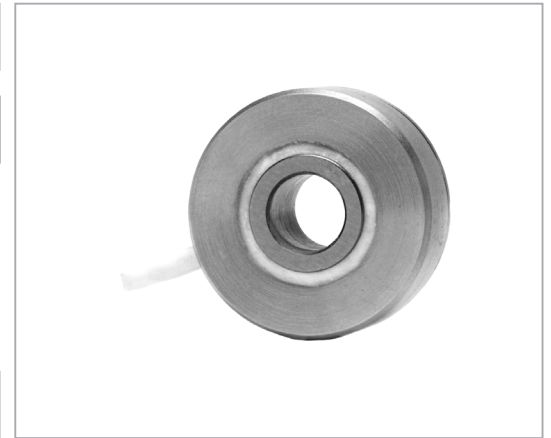


5FT OF 4-CONDUCTOR CABLE

White +Output
 Green -Output
 Black -Input
 Red +Input



max.
1,000
gram

**Measuring ranges**

- 0-100 to 0-1,000 g

**Features**

- Bolt Mount Design
- Low Profile
- For Small ID/OD Applications
- Fits up to 1/4" Bolt

**Drawing**

- 99-2768-0000

All dimensions are in inches, unless otherwise noted. Also available in metric units.

PERFORMANCE SPECIFICATIONS (FSO is Full Scale Output)		Capacity (gram)	Ordering Example	OD	H	ID thru hole
EXCITATION	5 VDC	100 - 1,000	XLD050	.50	.15	.100 dia
OUTPUT	20 mV/V Nominal	100 - 1,000	XLD075	.75	.25	.100 dia to .250 dia
BRIDGE RESISTANCE	500 Ohms (semiconductor)					
LINEARITY						
HYSTERESIS	±1.0% FSO, Combined					
REPEATABILITY						
ZERO BALANCE	±2% FSO					
OPERATING TEMP RANGE	-20 to +200°F (-29 to +93°C)					
COMPENSATED TEMP RANGE	+60 to +160°F (+15 to +71°C)					
THERMAL EFFECTS on Zero	±0.01% FSO/°F					
on Span	±0.02% Reading/°F					
SAFE OVERLOAD	150% of Capacity					
ULTIMATE OVERLOAD	300% of Capacity					
CASING MATERIAL	Stainless Steel					

How to order

Note: not all combinations are possible, see chart

